



ShapeMode®

FORMA LE TUE IDEE



# 3D MODELING RAPID PROTOTYPING 3D PRINTING

ShapeMode ([www.shapemode.it](http://www.shapemode.it)) is a Milan, Italy, based design, product development and rapid prototyping studio operating primarily within biomedical and jewelry custom production. Our primary objective is to help companies streamline their creative processes through technological innovation and advanced manufacturing tools

Our professional experience in this field has enabled us to interface with several different businesses, from creative centers to production managers, engineers, managers and C-level executives.

## PHILOSOPHY

Innovation, out-of-the-box thinking, and creativity all have the potential to change our world. We offer today the innovations that will be within everyone's reach tomorrow. Our philosophy seeks to upturn tradi-

tional manufacturing processes, with 0-Km production, sustainable materials and product personalization.

## MISSION

We work everyday to supply professionals, artisans, and enterprises the support and consultancy services they need to better understand innovative manufacturing technologies and the amazing, new opportunities made possible by rapid prototyping through 3D printing. We offer the opportunity to rapidly transform ideas into products by supplying the machines, tools and competence that can make it happen.

---



## HOW WE WORK

Companies and designers can bring us their creations as an early sketch, drawing or early CAD project. We complete the job anticipating any challenge that may arise during the production phase, including aspects concerning casting, molding or stone-setting. We create the CAD model. Our structure is composed of several different areas and specialized teams, each one integrates highly qualified personnel operating with extensive segment-specific experience.

**Dental and Biomedical Team:** biomedical engineers with different specializations capable of providing highly skilled support and the guarantee of knowing the products

**Jewelry Team:** highly creative jewelry designers who have mastered jewelry specific CAD software. They are supported by technicians who analyze a product's printability and identify the ideal process.

**Modelling Team:** a team of people who see modeling not just as a fun past time but a real artform. Experts who don't stop at production and seek to learn and understand the history of an object.

**Product Design Team:** many different professionals from designers to software developers, electronic and mechanical engineers. The team is completed by all those figures in the staff that operate within media and legal channels to offer support for patent submission, crowd funding campaigns and product marketing.

**Prototyping Team:** qualified professionals, with over 20 years of experience in the field, who can deliver prototypes for automotive and industrial machinery applications, though in depth knowledge of software such as Catia V4-V5, solid Edge, SolidWork, Inventor, Pro-e and FEM analysis.



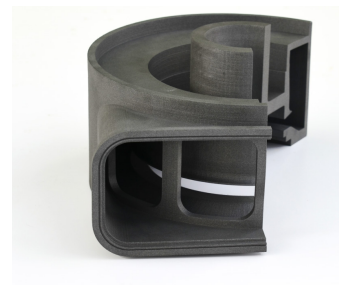
**AUTOMOTIVE**

---



**ENGINEERING**

---



**INDUSTRIAL DESIGN**

---

**FIELDS**



**BIOMEDICAL**

---



**JEWELRY**

---



**MODELING**

---

## **PARTNERS AND CLIENTS**

We are a unique company within the Italian National territory. We are always connected to the newest technologies on the market which we use to offer the highest quality service. We use the latest 3D printers with advanced SLA and DLP photopolymerization technology and high performance resins optimized for each application: from ultra smooth surfaces to high mechanical resistance, excellent precision down to the tiniest details.

We use Xfab 3D printers by DWS and we are official resellers of all systems by DWS. Our bundles include the Xfab 3D printer with resin cartridges and the Nauti+ software at a company price with no additional cost. Our main strengths are in our technicians, our post-sale assistance

and our highly trained customer support personnel.

We supply to every one of our clients the ideal tools for their specific requirements. We can supply high level technologies and systems to small and medium enterprises, as well as large corporations. We shape any idea, project and concept into real products, exactly the way they were imagined.

---

THIS IS THE FUTURE OF PRODUCTION.  
NOT JUST RAPID PROTOTYPING BUT REAL,  
RAPID MANUFACTURING.



XFAB



**TRY US:**

---

Tel. +39 349 848 3580

Inquiries: [info@shapemode.it](mailto:info@shapemode.it)

Press: [media@shapemode.it](mailto:media@shapemode.it)

Website: [www.shapemode.it](http://www.shapemode.it)

Milan Office: Via Privata Simone Schiaffino, 11